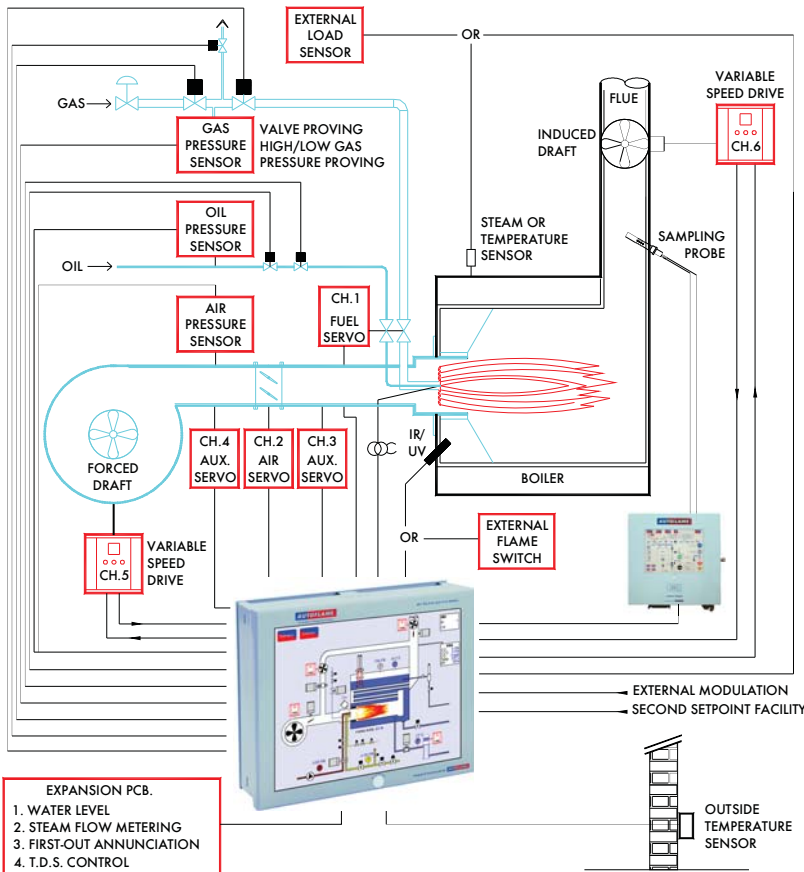


MK 7 EVOLUTION BURNER MANAGEMENT SYSTEM



Main Features and Benefits

- 10.4" Touch Screen
- Micro Modulation fuel/air ratio control
- UV or IR self check flame safeguard
- Burner safety control – user adjustable
- Gas valve proving
- Gas, oil & air pressure supervision
- Precise P.I.D. setpoint control
- FGR management
- Lead lag control for both steam and hot water (I.B.S.) – up to 10 boilers
- 3 parameter trim, O₂, CO₂ & CO
- Expansion PCB for water level control, flow metering and first-out annunciation
- 24 hour data logging

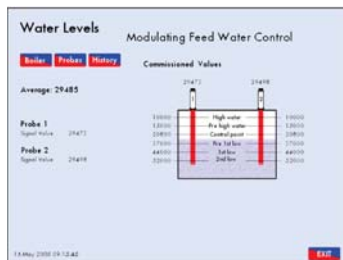
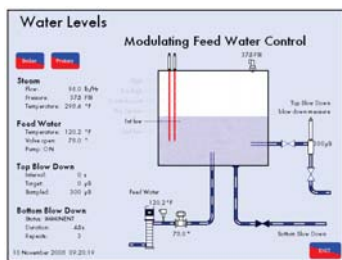
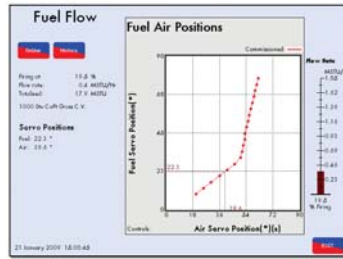
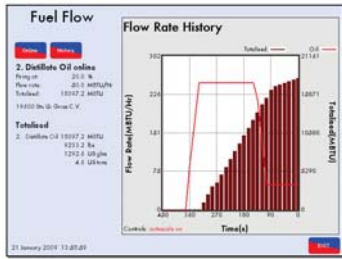
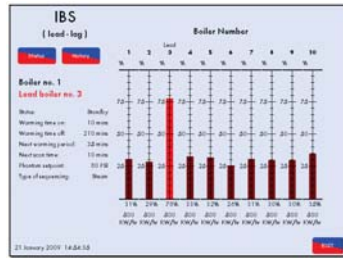
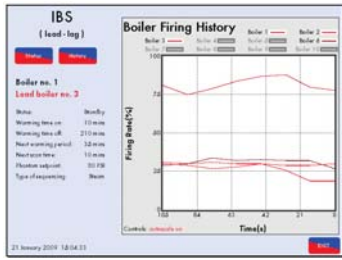
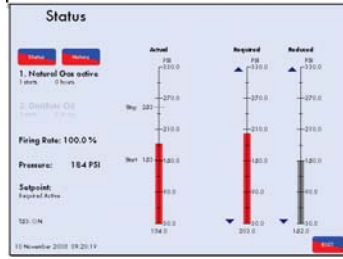
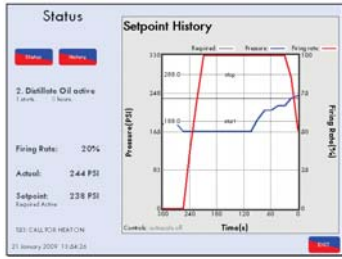
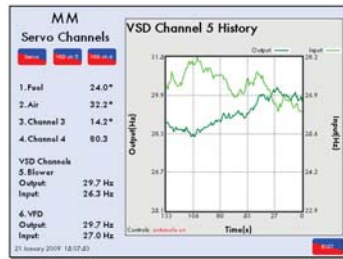
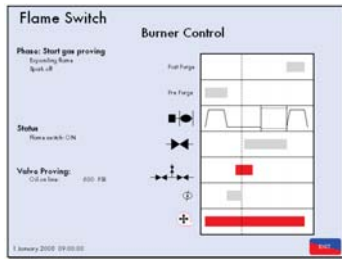
To ensure maximum efficiency in the operation of any boiler, two requirements are of paramount importance.

The first is that the air to fuel ratio is kept to a minimum to ensure complete combustion within the limitations of the combustion head design and that these settings, once arrived at, are infinitely repeatable to an incredibly high degree of accuracy.

The second requirement is that the target temperature or pressure of the boiler is monitored by the combustion system, and that at all times exactly the right amount of fuel and air is fired to achieve the target value.

The inherent hysteresis of all mechanical systems that have traditionally involved cams and linkages to characterise the fuel/air ratio have made this level of accuracy impossible. The accuracy of the fuel input with regards to the monitored target temperature/pressure of the boiler, has meant that the required setpoint has, at most times, been exceeded or fallen short of. Autoflame Engineering were the first in the World to develop a system that overcomes all these problems by utilising the latest microprocessor technology.

The Micro Modulation system provides an easily programmable and flexible means of optimising combustion quality throughout the load requirement range of the boiler/burner unit whilst ensuring the temperature is accurate to within 1.5°C. The positioning accuracy of the direct drive motors controlling the air damper and fuel valve is 0.1 angular degrees at any position across the load range. At the heart of the system is the control module which contains the micro computer and power supply. The front panel of the control module features a 10.4" touch screen.



Micro Modulation Fuel/Air Ratio Control

- Independently controlled fuel and air positioning motors with an accuracy of 0.1 of an angular degree.
- 4 separate fuel curves
- 4 dedicated servo drives
- 2 dedicated variable speed drives.
- Selectable trim channel (damper or vsd).
- Error diagnostic codes displayed.
- Single point change facility for commissioned fuel/air ratio.
- User definable optimum ignition position.
- FGR Management, delay from start-up to enable FGR until flue gas temperature, boiler setpoint or time delay achieved.

Boiler Control Box Functions

- Full flame supervision with UV self-check for continuous operation, patented self adaptive UV amplification.
- Burner control functions with user configurable timings.
- Burner control functions (flame safeguard) selectable.
- Gas Valve proving system with on-line pressure supervision.
- Oil pressure monitoring and display with limit checks.
- Air windbox pressure proving – display and supervision.
- Lockout history of last 16 incidents with date, time, function & reset.

Setpoint Control Features

- Internal 3 term PID control to required setpoint for both pressure and temperature.
- Software adjustable thermostat/pressure stat. facility.
- Second setpoint user adjustable.
- Time clock facility, reduced setpoint and off modes.
- Outside temperature compensation
- Intelligent Boiler Sequencing for both steam & hot water.
- Intelligent Boiler Sequencing for low pressure steam.
- Fuel flow metering – instantaneous and totalised.
- Hand/Auto/Low flame hold facilities.
- 4-20 mA input for external load control.
- 4-20 mA output of firing rate.
- Twin burner and multi burner control capability.

User Features

- Password protection, user configurable options and parameters.
- IR coms port for upload/download of commissioned data
- All systems data exports via gateway (Modbus).
- Internal calendar clock display and logging functions.

Technical Specifications

Part Number	MM70001/E
Power Supply	230V 50Hz/110V 60Hz
Ambient Temperature Limits	+5°C to +40°C
Environmental Rating	IP65/NEMA 4 enclosure with panel facia mounting

Up to 6 x 4-20mA Output Signals Available



Autoflame Engineering Ltd.

Telephone +44 (0)845 872 2000 Fax +44 (0)845 872 2010

Email salesinfo@autoflame.com Website http://www.autoflame.com/